

A hyperspectral satellite image of a coastal area, showing intricate patterns of land and water. The land is a mix of brown and green, indicating different vegetation and soil types. The water is a deep blue, with lighter green and yellowish areas near the shore, possibly indicating sediment or shallow water. A green rectangular overlay covers the left side of the image, containing white text.

KUVA SPACE

Improving life on Earth with spaceborne hyperspectral data services

Space Business Forum, 25 Sep, 2024
Jarkko Antila, CEO

Team

A team of 30 experienced professionals with extensive full-vertical expertise:

- leadership abilities
- camera spectral elements
- satellite ground station engineering
- AI and analytics
- business development
- marketing and PR
- funding and exit

The core team successfully launched 3 satellites with no VC funding.

KEY PERSONS



Jarkko Antila

CEO

Deep-tech serial entrepreneur with 20+ years in leadership and technology with an exit



Tuomas Tikka

CTO, Co-founder

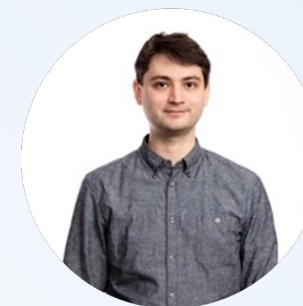
Awarded small satellite technology pioneer with 10+ years of experience from spacecraft development.
Founder and ex-CEO of Kuva Space



Janne Kuhno

Lead Engineer, co-founder

10 years of hands-on satellite and mission development.
Co-founder at Kuva Space



Daniel Landau

Director of IT & Software Engineering

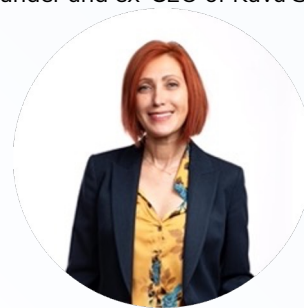
10 years of software and data management in HPC, consulting and space tech



Jerry Welsh

Head of US operations

Ex ICEYE US CEO, and CFO of ICEYE corp, Techstar mentor and CEO/Founder of ExecOne business consultancy company



Dr. Michal Shimoni

Head of Analytics & Applications

Award winning, distinguished ISR (HSI and SAR) scientist with +20 years experience with Belgium Royal Military Academy and NATO



André Parris

Head of Global Business Development

Bloomberg, planet, Descartes, Atlas AI, Blacksky, Thomson Reuters, Delta Force Analytics
CEO & Founder



Malathy Eskola

Director of Marketing & PR

Ex-Microsoft Finland CMO, 20+ years in B2C/B2B branding, marketing and PR

KUVA SPACE

Addressing major global challenges



Climate change

Unlocking the potential of (blue) carbon markets



Food security

Accurate yield estimations and improvements

Safety and security

Automated threat detection over wide areas



World's most extensive hyperspectral satellite constellation **for superior coverage and timely insights**



Proprietary microsatellite and patented camera technology



Automated AI-powered analytics and value adding services within 1-2 hours

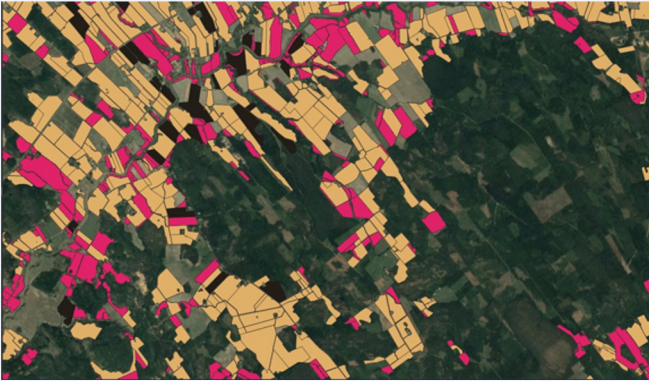


Disruptive and sustainable subscription-based business model

	2024	2027	2030
Satellites	2	36	100
Revisit	2 wk	Daily	2-3 / day

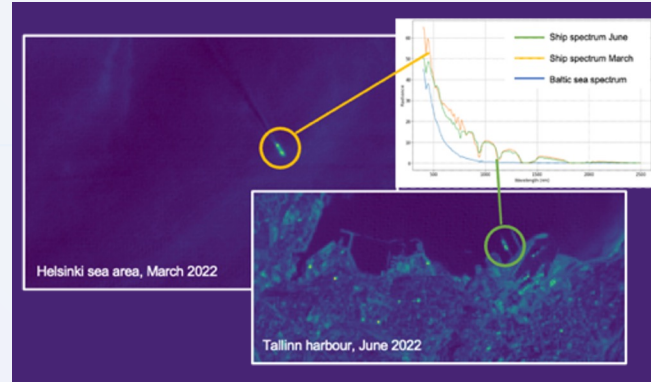
Wavelength ranges: VIS/NIR/SWIR
Ground resolution: 10-20 m

Markets and **services**



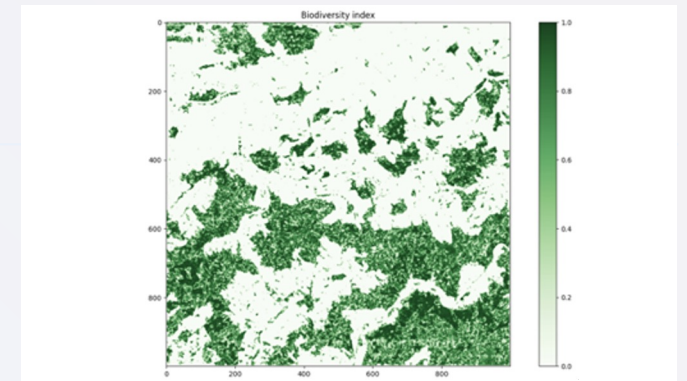
Finance, insurance and food security

Accurate global yield forecasts and crop health analysis for trading and parametric insurances



Safety and security

Automatic detection of changes in any material on land and at sea for governmental customers



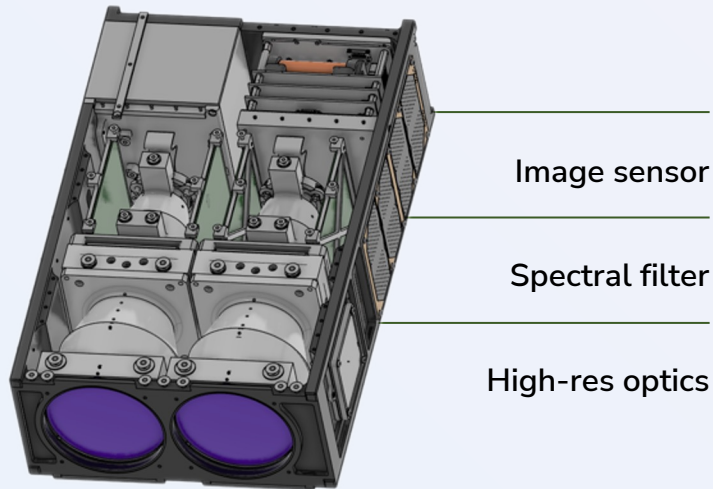
Carbon and environment

Reliable global verification of carbon sequestration and biodiversity for environmental agencies and corporations

Wide-coverage, always-on services using SaaS model

Unique camera technology

Patented in-orbit tunable spectral camera enables superior data quality compared to competitors



Scanning

Continuous data acquisition

Suitable for monitoring changes over large areas and collecting archive data



Application optimized scanning

Continuous AI-driven data acquisition

Selected channels to increase data quality

Best quality data for selected application

Only we can do this



Application optimized staring

Selected targets

AI-driven data acquisition

Enhanced resolution and quality

Maximized quality and detection sensitivity for most challenging applications

Only we can do this

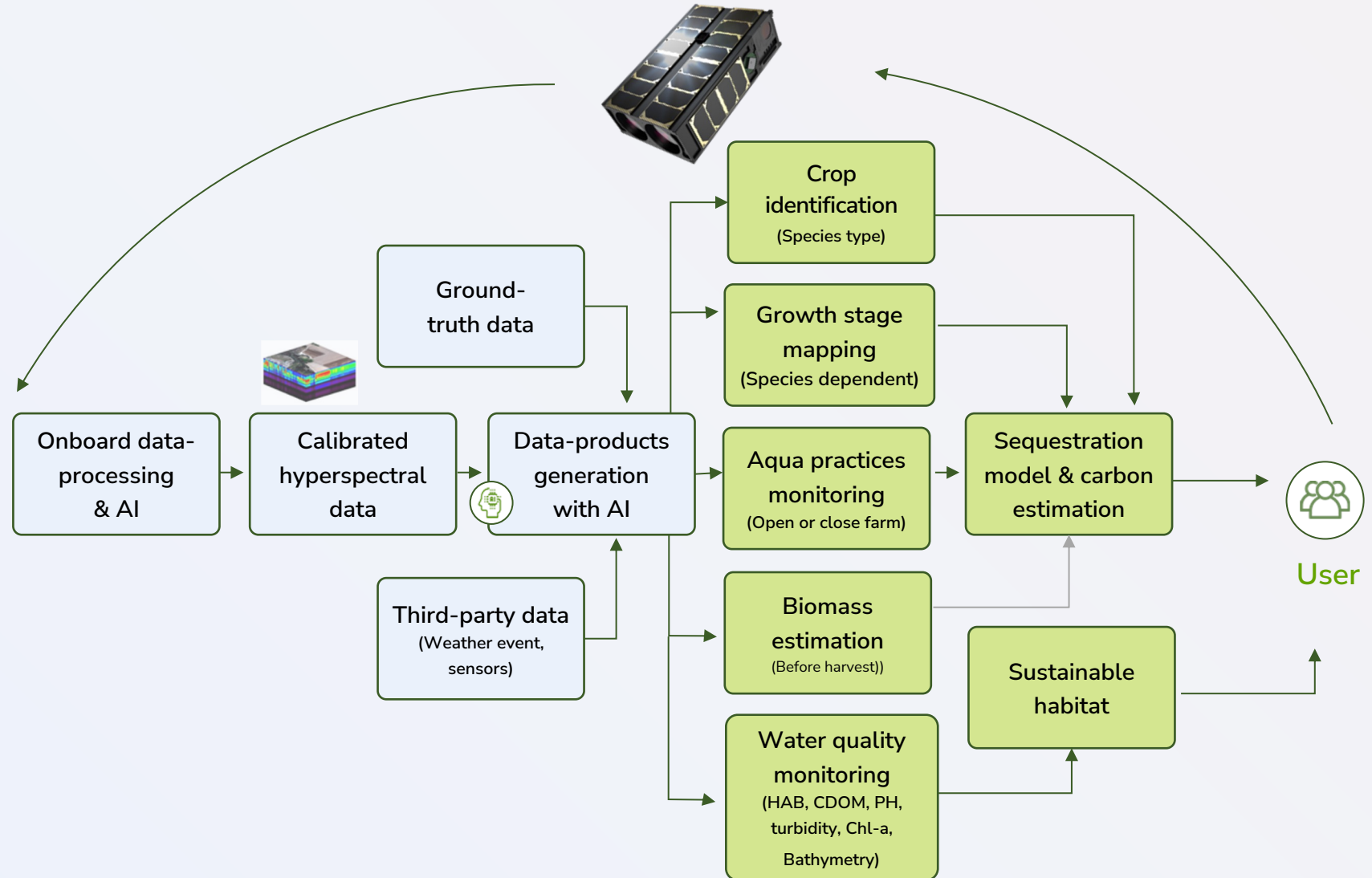
Reliable services with sub-weekly data updates

Sub-weekly optimized data acquisition with Kuva Space satellites

Automated AI-powered ready-to-use insights in 1-2 hours via API/dashboard

Evidence based decision-making

Affordable subscription-based pricing

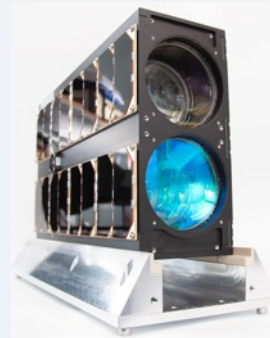


Recent highlights



Kuva Space was awarded a **5M€ commercial contract to be sole provider of hyperspectral** imaging data services to the European Commission Copernicus program

March 2023



Successful launch of Hyperfield-1, our first commercial-grade AI-powered hyperspectral satellite

Aug 2024



New funding raised: **16.6M€**

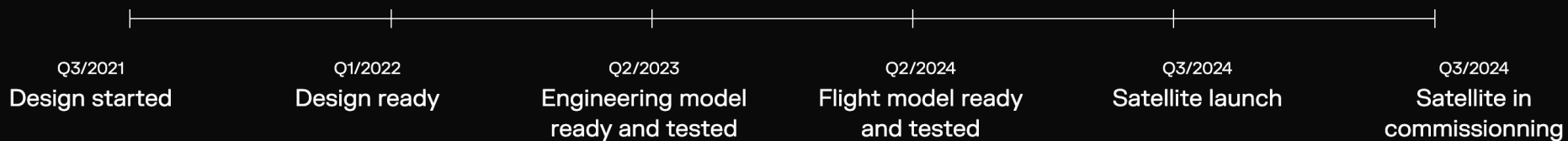
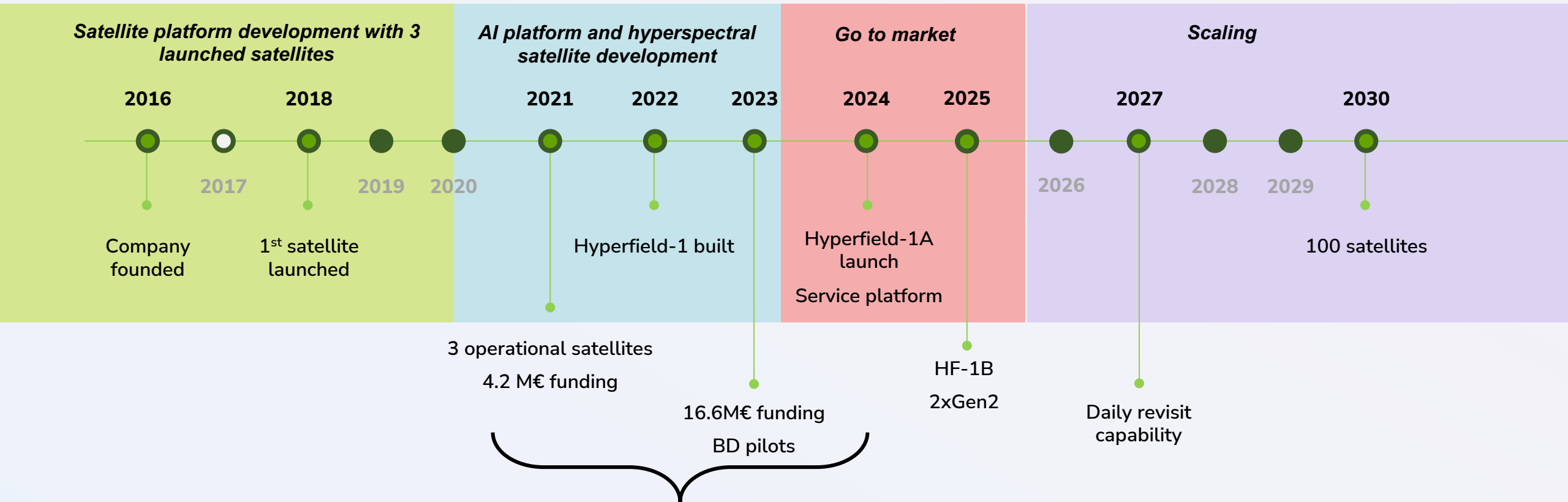
Sep 2023

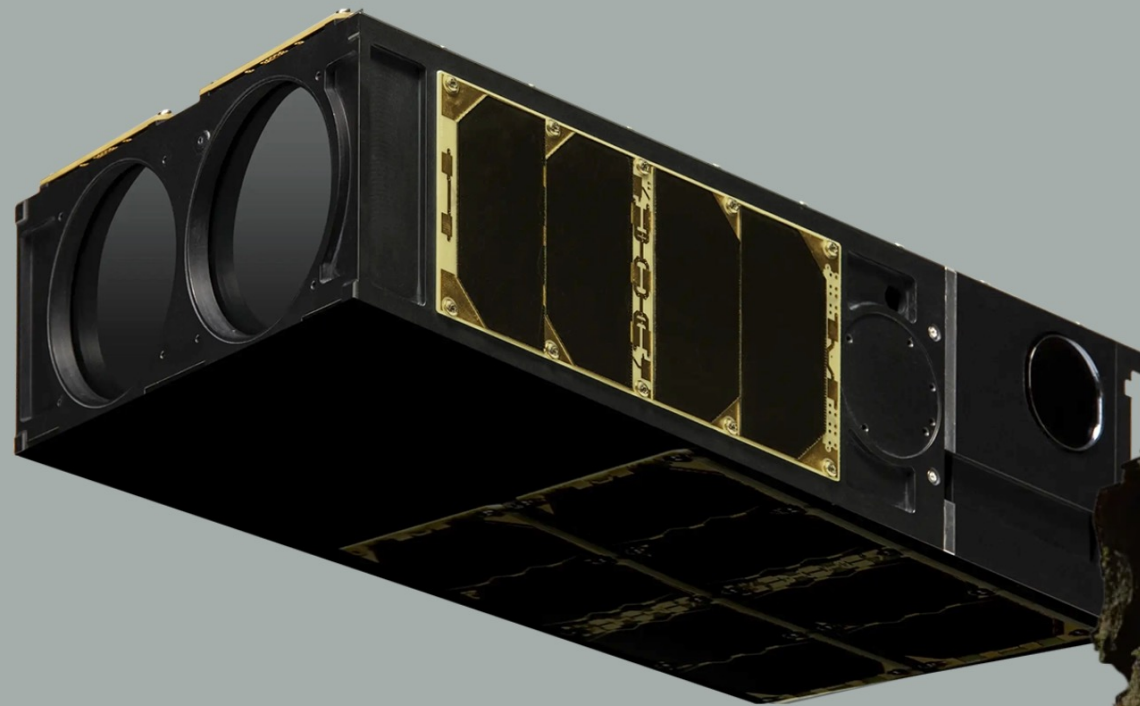


US Legal entity established, operations ramping up

Apr 2023

Company timeline





Hyperfield-1 is the first satellite of what will be a 100-strong constellation by 2030, delivering near real-time intelligence for decision-makers across industries. This launch raises the bar for what hyperspectral microsatellites are capable of.

[+ About the mission](#)

KUVA SPACE

[ABOUT HYPERFIELD-1](#)

[ABOUT KUVA SPACE](#)

[SIGN UP](#)

[KUVASPACE.COM](#)

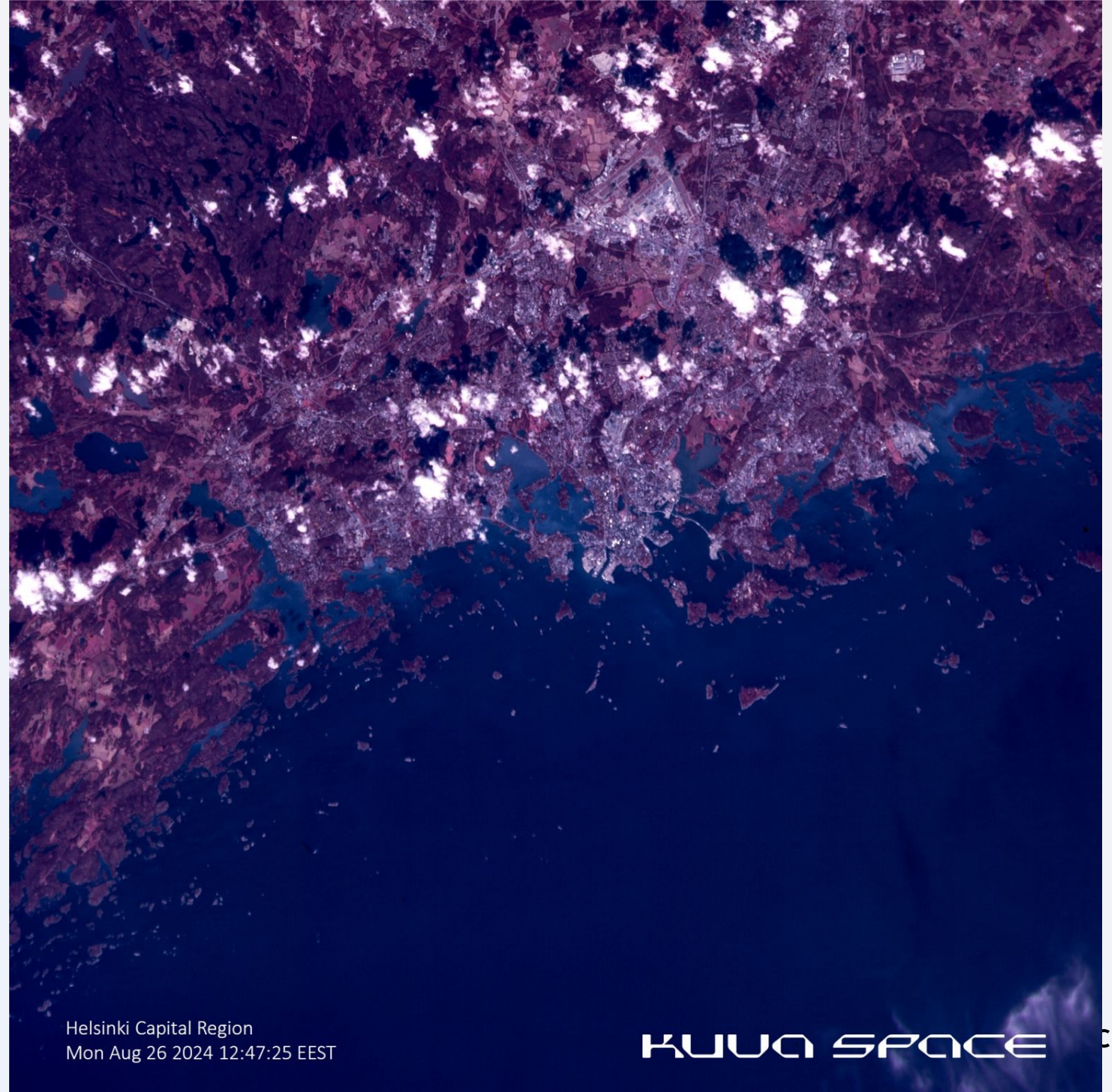
HYPERFIELD.KUVASPACE.COM



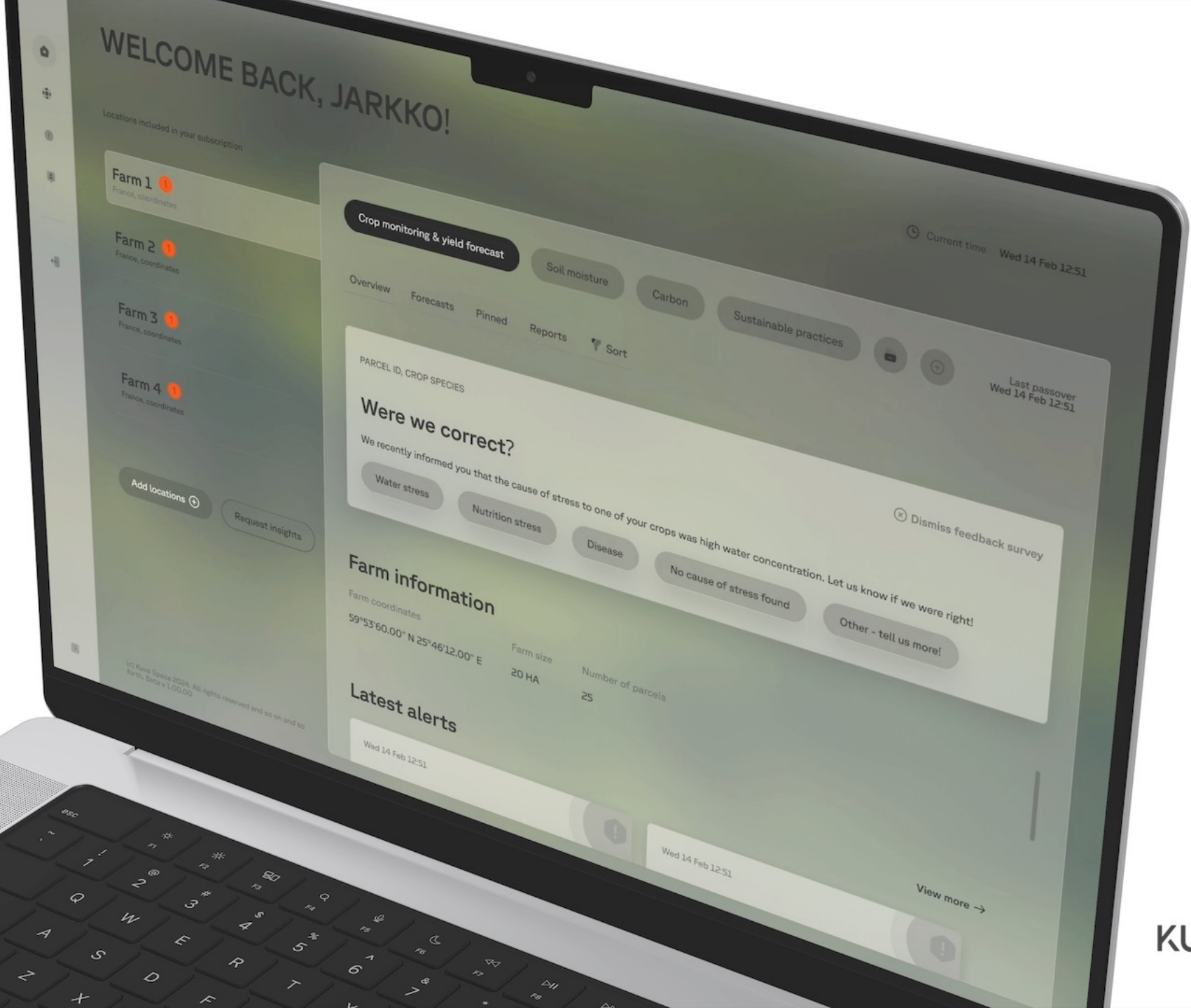
HYPERFIELD
PALE ALE

Previous video on LinkedIn:
https://www.linkedin.com/posts/andreparis_just-a-quick-reflection-and-some-musings-activity-7231642562602696705-ZOtC

FIRST LIGHT IMAGE



The Early Access Program gives customers and partners to be first in line to get updates and the possibility to try out and co-develop our services.



KUVA SPACE

TOGETHER TOWARDS A SUSTAINABLE
PLANET AND PROSPEROUS HUMANKIND

Jarkko Antila, CEO



+358 50 529 8876



Kuva Space Oy

Otakaari 5, 02150 | Espoo, Finland



jarkko.antila@kuvaspace.com



www.kuvaspace.com