



Growth Journey

Aurora Propulsion
Technologies

2026

We move in space



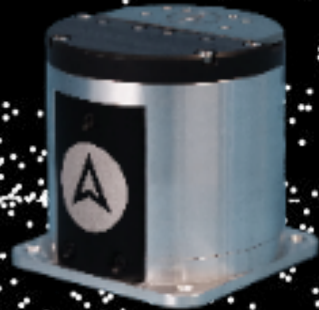
Key milestones

The background of the slide is a composite image of Earth from space. The left half shows a view of Earth's surface with clouds and landmasses, while the right half shows a view of Earth's horizon with a bright light source (the Sun) creating a lens flare effect. In the upper right corner, the Moon is visible in the dark sky, surrounded by stars.

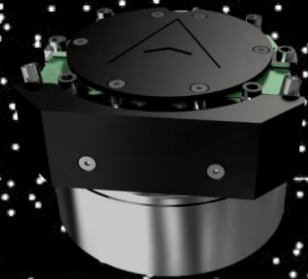
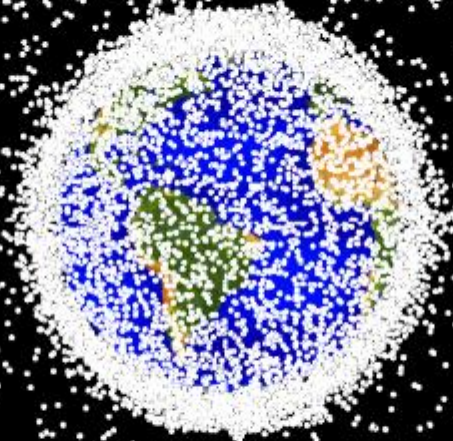
First Volume Products on the Market & Solid Customer Traction

Longer Operative lifetime
for spacecraft

Smallest and most cost-efficient
space craft modules on the market



Plasma Brake



Thrusters

Compliance to current and upcoming regulation

17,500 operational satellites in 2025

130,000 operational satellites in 2030



Flights in orbit

AuroraSat-1 2022

6-thruster ARM-A attitude control system and two Plasma Brake prototypes

Strider 2023

In-Orbit Demonstration of the multi-modal MEPE propulsion system.

Wisdom 2025

4 Aurora ARM-C thrusters and an Aurora Plasma Brake production models.

SpeQtral-1 2026

Pilot constellation customer Aurora Plasma Brake.

Confidential customer 2026

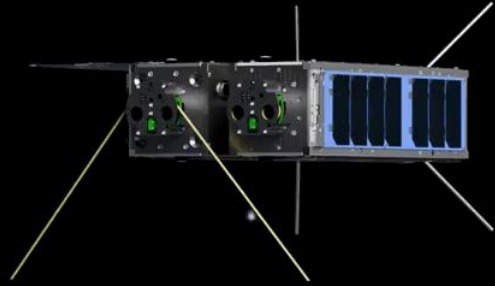
Pilot customer of New larger product ARM-O dual thruster systems used in formation flying.





AURORA

PROPULSION TECHNOLOGIES



AURORA
PROPULSION TECHNOLOGIES



AURORA

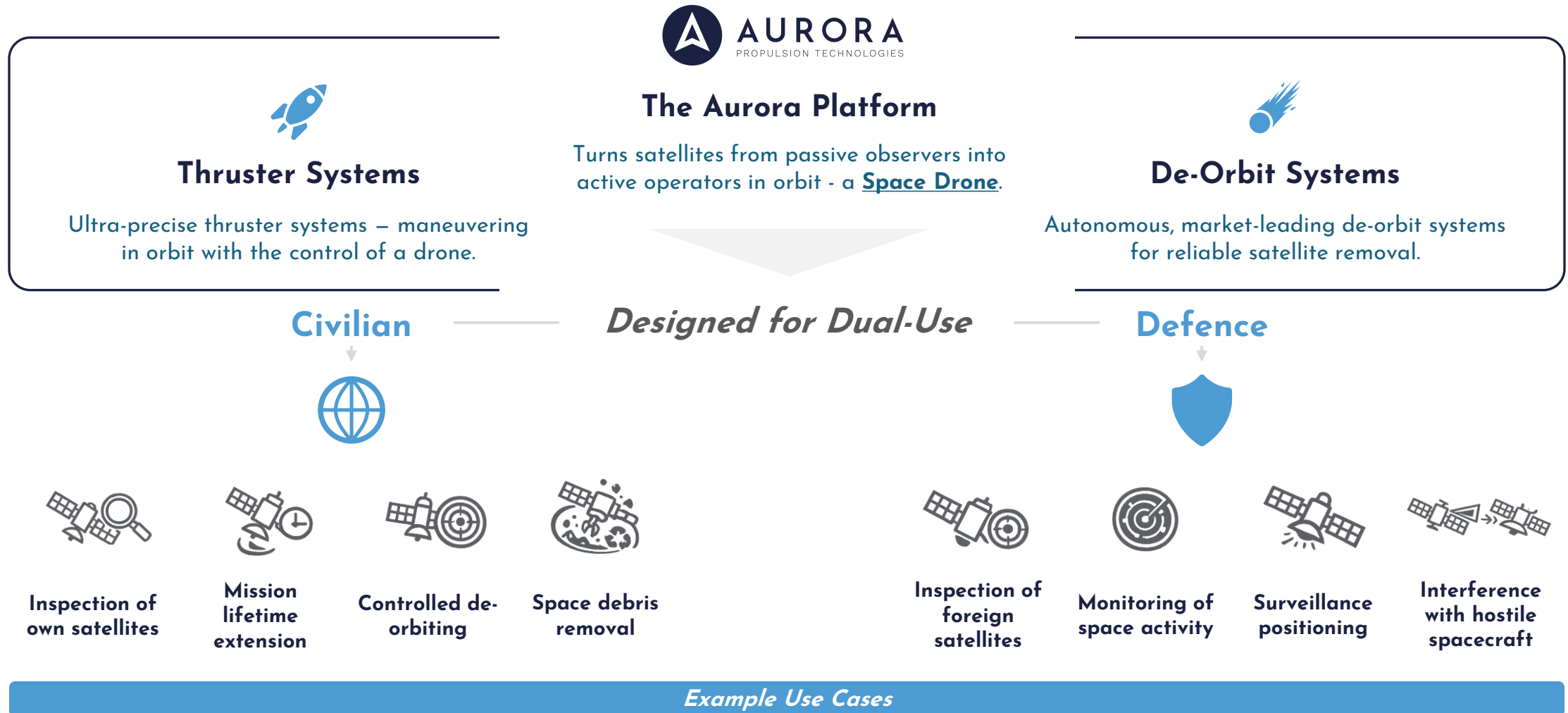
PROPULSION TECHNOLOGIES



What lies Next?

Introducing The Offering for Scaleup

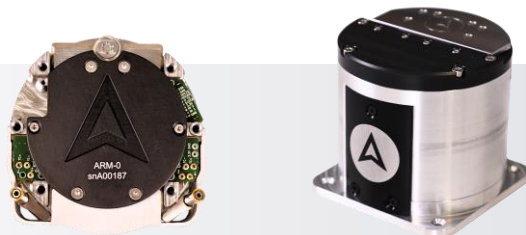
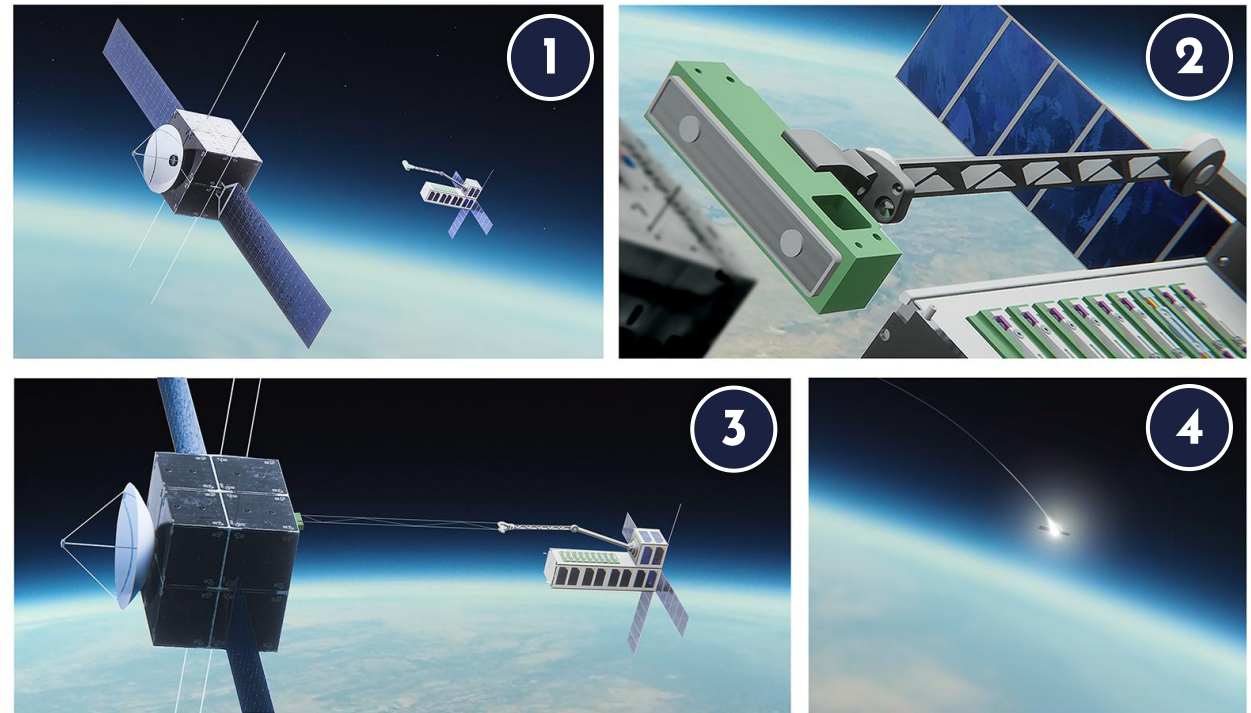
Dual-use space operations capability for Commercial & Defence missions.



Platform Visualized in Example Mission

Aurora's product platform allows for Dual-Use purpose, benefitting both Aurora as well as 3rd party actors.

- 1
Precision approach: Aurora ARM-series thrusters enable safe close-in approach, inspection, controlled station-keeping, and precise alignment with 3rd party satellite.
- 2
Brake attachment: Stabilized attitude control and relative-motion damping enable controlled capture and secure installation of the Aurora plasma brake on the client satellite.
- 3
Brake deployment: The plasma brake deploys through tether extension, extending it to its operational length and transitioning the system into a deorbit-ready configuration.
- 4
Dual-use & Revenue: The third-party satellite gains autonomous end-of-life deorbit capability, supporting debris mitigation and regulatory compliance while Aurora continues its mission and monetizes the deorbit service.



Mission Hardware in Use

Superior European Sovereign Capability

De-orbiting, Moving in Space, inspection, docking, Space drones



Questions to a rocket man?

Roope Takala

roope.takala@aurorapt.fi

aurorapt.space